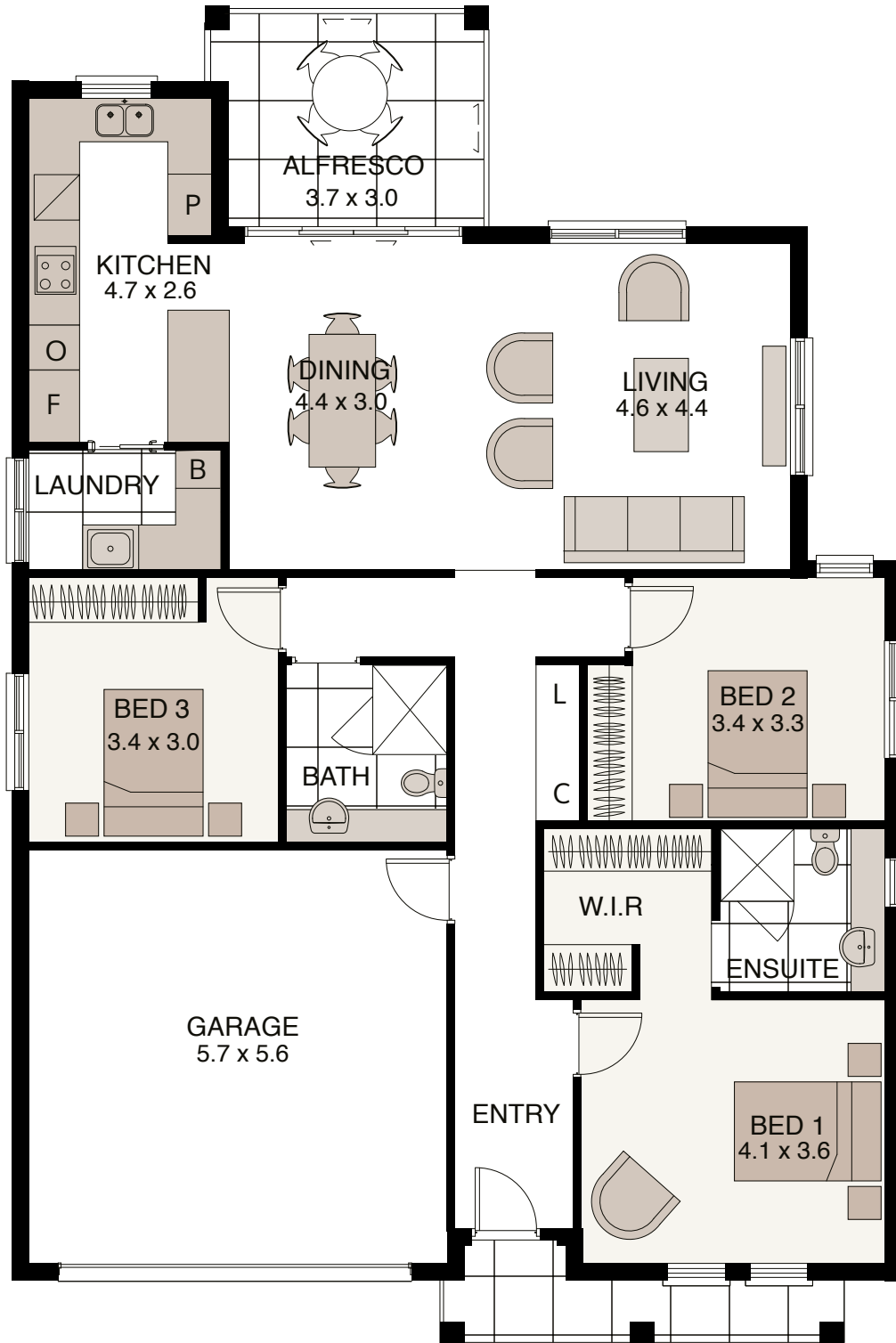


The Deloraine

3 | 2 | 2



Total areas Living 134.5m² Garage 34m² Alfresco + Porch 16.4m² Total 184.9m²

The Deloraine

3 | 2 | 2



Property details: Lot no _____ Lot area _____ Home price _____ Date ____/____/____

FEATURES

- Walk-in and built-in robes
- Open plan living-dining area
- Luxurious bathroom
- Ensuite off master bedroom
- Internal laundry
- Caesarstone benchtops
- Quality european appliances
- Ample storage
- Indoor/outdoor alfresco
- Reverse cycle ducted air conditioning
- Security intercom and alarm
- Velocity high speed Internet
- Landscaped and irrigated gardens
- Double garage

www.antegra.com.au
1 Antegra Drive, Leppington 1800 740 674

Images are indicative only. Internal images are for illustrative purposes only and may not be of the house type shown. Information contained herein is subject to change without notice. See contract for details.

Antegra
ESTATE